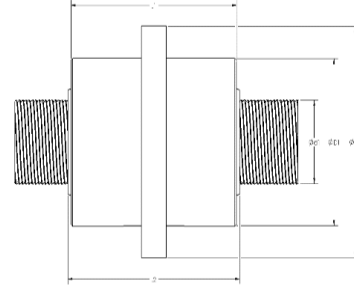


CMC High Performance Roller Screw

- d_1 = Shaft OD
- D_1 = Cylindrical nut OD
- D_2 = Nut flange OD
- L_1 = Nut length - no wipers
- L_2 = Nut length - with wipers



Diameter x Pitch	d1 (mm)	Efficiency	Single nut with backlash		D1 (mm)	D2 (mm)	L1 (mm)	L2 (mm)
			C (kN)	Co (kN)				
8x3	8.2	92.00%	8.9	18.2	21	41	31	41
8x5	8.4	92.70%	7.3	14.8	21	41	31	41
12x3	12.1	91.50%	28.2	58.1	30	48	44	54
12x5	12.3	92.20%	26	54.9	30	48	44	54
15x5	15.3	91.70%	35	73.8	34	56	50	60
15x10	15.5	91.30%	31.6	65.8	34	56	50	60
20x5	19.8	90.80%	63.8	134.7	42	64	55	65
20x10	20.1	92.70%	70.9	149.7	42	64	55	65
21x5	21.3	90.40%	71.3	150.5	45	68	54	64
21x10	21.6	92.60%	70.3	148.4	45	68	54	64
25x4	24.2	88.20%	118.3	249.8	53	84	78	88
25x5	24.3	89.70%	112.5	237.4	53	84	78	88
25x10	24.6	92.20%	108.6	229.3	53	84	78	88
30x5	30.3	88.20%	133.6	281.99	62	92	85	99
30x12	30.8	92.10%	130.8	278.1	62	92	85	99
30x20	31.2	92.70%	129.4	273.3	62	92	85	99
36x12	36.7	91.70%	122.3	258.2	74	106	80	92
39x5	39.3	86.10%	170.8	360.5	80	116	100	114
39x10	39.6	90.80%	160.9	339.7	80	116	100	114
39x12	39.7	91.40%	168	354.6	80	116	100	114
39x15	39.9	92.60%	170.1	358.2	80	116	100	114
48x5	48.3	84.50%	258.9	546.6	100	150	127	141
48x8	48.5	88.20%	237.8	501.9	100	150	127	141
48x10	48.6	89.70%	221	466.6	100	150	127	141
48x18	49.1	92.00%	267.8	565.3	100	150	127	141

NOTE: This is a sampling of sizes only. If you do not see the size you need on this table (continued on following page), contact CMC Sales Engineering for assistance.



Sold & Serviced By:



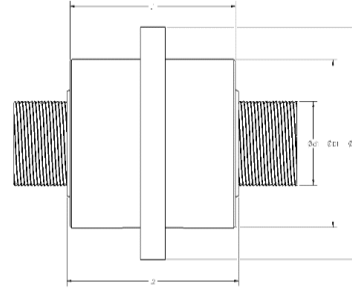
Toll Free Phone (877) SERV098

www.electromate.com

sales@electromate.com

CMC High Performance Roller Screw

- d_1 = Shaft OD
- D_1 = Cylindrical nut OD
- D_2 = Nut flange OD
- L_1 = Nut length - no wipers
- L_2 = Nut length - with wipers



Diameter x Pitch	d1 (mm)	Efficiency	Single nut with backlash		D1 (mm)	D2 (mm)	L1 (mm)	L2 (mm)
			C (kN)	Co (kN)				
48x24	49.4	92.70%	300.8	365.0	100	150	127	141
56x12	56.7	89.90%	458.4	967.7	122	162	166	180
56x30	57.5	92.70%	602.9	1,304.8	122	162	166	180
60x15	60.9	90.60%	448.7	947.3	122	162	166	180
60x20	61.2	91.70%	489.9	1,034.1	122	162	166	180
60x25	61.5	92.20%	523.1	1,104.3	122	162	166	180
60x30	61.8	92.70%	543.3	1,147.0	122	162	166	180
64x12	64.8	89.10%	388.2	830.5	115	180	129	147
64x18	64.9	91.10%	432.0	935.0	115	180	129	147
64x24	65.2	92.00%	468.7	1,014.5	115	180	129	147
75x10	75.6	86.40%	663.5	1,890.2	150	195	191	209
75x20	76.2	90.90%	754.7	1,948.1	150	195	191	209
75x40	77.4	92.70%	665.2	1,975.3	150	195	191	209
80x12	80.6	87.20%	644.8	1,395.5	138	180	156	174
80x18	80.9	90.10%	729.2	1,578.2	138	180	156	174
80x24	81.2	91.30%	772.9	1,672.7	138	180	156	174
80x36	81.8	92.40%	813.1	1,759.8	138	180	156	174
100x12	100.6	85.60%	1,130.2	4,222.2	200	245	260	281
100x20	100.2	89.50%	1,427.9	4,125.5	200	245	260	281
100x35	101.1	91.80%	1,377.2	4,360.1	200	245	260	281
100x50	102	92.70%	896.5	4,328.9	200	245	260	281
120x20	121.2	88.16%	1,604.0	6,258.5	240	295	330	355
120x35	121.2	89.81%	1,645.3	7,003.2	240	295	330	355
150x40	151.8	88.20%	2,191.6	9,499.8	320	385	412	437
150x50	151.8	89.50%	2,208.1	9,465.4	320	385	412	437

NOTE: This is a sampling of sizes only. If you do not see the size you need on this table (continued on previous page), contact CMC Sales Engineering for assistance.



Sold & Serviced By:



Toll Free Phone (877) SERV098

www.electromate.com

sales@electromate.com